



203-270-2900  
sales@theFireFarm.com

## 2023 CHALLENGER CABINETS

**CHALLENGERDESIGNS**  
*+outdoor kitchens*

### 3 DRAWER BASE



1 Drawer: 5.5"H  
Drawer 2 -3: 9.75"H

ITEM	WIDTH
3ODBC-153528	15"
3ODBC-183528	18"
3ODBC-213528	21"
3ODBC-243528	24"
3ODBC-273528	27"
3ODBC-303528	30"
3ODBC-333528	33"

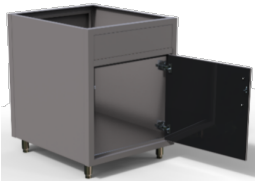
### 4 DRAWER BASE



Drawers 1-3: 5.5"H  
Drawer 4: 7"H

ITEM	WIDTH
4ODBC-153528	15" W
4ODBC-183528	18" W
4ODBC-213528	21" W
4ODBC-243528	24" W
4ODBC-273528	27" W
4ODBC-303528	30" W
4ODBC-333528	33" W

### SINK BASE



False Panel at Top  
18" - 24" = 1 Door (LH or RH)  
27" - 48" = 2 Door (LH/RH)  
No shelf, No drawer

ITEM	WIDTH
OSB-183528	18"
OSB-213528	21"
OSB-243528	24"
OSB-273528	27"
OSB-303528	30"
OSB-333528	33"
OSB-363528	36"
OSB-393528	39"
OSB-423528	42"
OSB-453528	45"
OSB-483528	48"

### FARMHOUSE (APRON) SINK BASE



For Beverage Centers & Apron Sinks

ITEM	WIDTH
OASB-363528	36"
OASB-393528	39"
OASB-423528	42"
OASB-453528	45"
OASB-483528	48"

### ADA SINK BASE



False Panel at Top  
Includes 4 ADA Legs (1 1/2" h)  
Removable panel for plumbing access

ITEM	WIDTH
OSB-363528 ADA	36"
OSB-393528 ADA	39"
OSB-423528 ADA	42"
OSB-453528 ADA	45"
OSB-483528 ADA	48"

### DRAWER/DOOR BASE



1 Drawer: 5.5"H  
1 Full Width Adj Shelf  
12" - 24" = 1 Door (LH or RH)  
27" - 48" = 2 Door (LH/RH)

ITEM	WIDTH
OSDDB-153528	15"
OSDDB-183528	18"
OSDDB-213528	21"
OSDDB-243528	24"
OSDDB-273528	27"
OSDDB-303528	30"
OSDDB-333528	33"
OSDDB-363528	36" (2 drawers)
OSDDB-393528	39" (2 drawers)
OSDDB-423528	42" (2 drawers)
OSDDB-453528	45" (2 drawers)
OSDDB-483528	48" (2 drawers)



203-270-2900  
sales@theFireFarm.com

**2023 CHALLENGER CABINETS**

**CHALLENGERDESIGNS**  
*+outdoor kitchens*

**DOOR BASE**



1 Full Width Adj Shelf  
12" - 24" = 1 Door (LH or RH)  
27" - 54" = 2 Door (LH/RH)

ITEM	WIDTH
ODB-123528	12"
ODB-153528	15"
ODB-183528	18"
ODB-213528	21"
ODB-243528	24"
ODB-273528	27"
ODB-303528	30"
ODB-333528	33"
ODB-363528	36"
ODB-393528	39"
ODB-423528	42"
ODB-453528	45"
ODB-483528	48"
ODB-543528	54"
ODB-123512	12"
ODB-153512	15"
ODB-183512	18"
ODB-213512	21"
ODB-243512	24"
ODB-273512	27"
ODB-303512	30"
ODB-333512	33"
ODB-363512	36"
ODB-393512	39"
ODB-423512	42"
1 Full Width Adj Shelf	
12" - 24" = 1 Door (LH or RH)	
27" - 54" = 2 Door (LH/RH)	
ODB-453512	45"
ODB-483512	48"
ODB-543512	54"

**PENISULA BASE**



1 Full Width Adj Shelf  
12" - 24" = 1 Door (LH or RH)  
27" - 54" = 2 Door (LH/RH)

Door Options: 2-RH, 2-LH or 1RH with 1LH

ITEM	WIDTH
OPDB-123528	12"
OPDB-153528	15"
OPDB-183528	18"
OPDB-213528	21"
OPDB-243528	24"
OPDB-273528	27"
OPDB-303528	30"
OPDB-333528	33"
OPDB-363528	36"
OPDB-393528	39"
OPDB-423528	42"
OPDB-453528	45"
OPDB-483528	48"
OPDB-543528	54"

**BUILT IN APPLIANCE BASE**



ITEM	WIDTH
BIAB-303528	30"
BIAB-363528	36"
BIAB-393528	39"
BIAB-423528	42"
BIAB-483528	48"

**INTERNAL SLIDE OUT/DOOR BASE**



2 Internal Non Adjustable Slide Outs (1 Top Middle, 1 Floor Mount)  
1 Door (LH or RH)

ITEM	WIDTH
OISDB-153528	15"
OISDB-183528	18"
OISDB-213528	21"
OISDB-243528	24"



203-270-2900  
sales@theFireFarm.com

**2023 CHALLENGER CABINETS**

**CHALLENGERDESIGNS**  
*+outdoor kitchens*

**INSIDE CORNER BASE**



1 Door (LH or RH)  
1 Full Width Adj Shelf  
Door Width = 13.75"

CANNOT be at End of Cabinet Run or Beside Opening

ITEM	WIDTH
OICCB-403528	40"

**BLIND BASE**



1 Door (LH or RH)  
1 Full Width Adj Shelf

3" Filler panel recommended for door clearance

ITEM	WIDTH
OBBC-483528	48"

**BLIND BASE w/ REAR ACCESS**

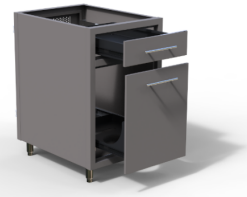


2- Door (LH or RH)  
1 Full Width Adj Shelf

3" Filler panel recommended for door clearance

ITEM	WIDTH
OBBCRA-483528	48"

**PULL OUT PROPANE BASE**



Vented  
1 Drawer: 5.5"H

Slide Out Tray for LP Tank (20 lb. only)

ITEM	WIDTH
OPC-213528	21"

**DROP -IN PROPANE BASE**



Vented  
1 Drawer: 5.5"H, 1 Door (LH or RH)  
Laser Cut Hole for LP Tank (20 lb. only) in Floor

ITEM	WIDTH
ODPC-183528	18"
ODPC-213528	21"
ODPC-243528	24"



203-270-2900  
sales@theFireFarm.com

**2023 CHALLENGER CABINETS**

**CHALLENGERDESIGNS**  
*+outdoor kitchens*

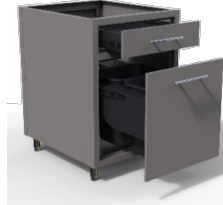
**DROP-IN PROPANE BASE FULL DOOR**



ITEM	WIDTH
ODPFD-183528	18"
ODPFD-213528	21"
ODPFD-243528	24"

Vented  
1 Drawer: 5.5"H, 1 Door (LH or RH)  
Laser Cut Hole for LP Tank (20 & 30 lb.only) in floor

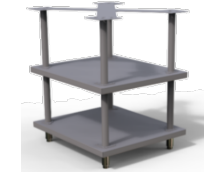
**WASTE BIN**



ITEM	WIDTH
OWBC-153528	15"
OWBC-183528	18"
OWBC-213528	21"
OWBC-243528	24"

1 Drawer: 5.5" H  
Slide Out Waste Bin Tray  
15" & 18" Single Waste Bin  
21" & 24" Double Waste Bin (7 gallon bin)

**OPEN SHELF**



ITEM	WIDTH
OOSU-243528	24"

CANNOT be used  
with an Outdoor Island Base

**OPEN STORAGE**



ITEM	WIDTH
OOCU-243528	24"

1 Adjustable Shelf  
Powder Coat Finished Interior  
Comes with finished sides

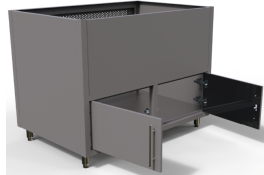
**OPEN 3 SHELF STORAGE**



ITEM	WIDTH
OOSB-243528	24"

Fixed Black Shelves

**GAS GRILL BASE - DEEP CUT**



ITEM	WIDTH
OGGBD-363528	36"
OGGBD-393528	39"
OGGBD-423528	42"
OGGBD-453528	45"
	48"

2 Door (LH/RH)  
Vented in Floor and Back Panel  
Custom Appliance Skirt at Top: 1.6" Tall  
Does not Accommodate a LP Tank

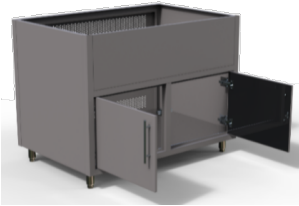


203-270-2900  
sales@theFireFarm.com

**2023 CHALLENGER CABINETS**

**CHALLENGERDESIGNS**  
*+outdoor kitchens*

**GAS GRILL / SIDE BURNER BASE**



	ITEM	WIDTH
	OGGB-183528	18"
	OGGB-213528	21"
	OGGB-243528	24"
	OGGB-273528	27"
	OGGB-303528	30"
	OGGB-333528	33"
	OGGB-363528	36"
	OGGB-393528	39"
	OGGB-423528	42"
	OGGB-453528	45"
	OGGB-483528	48"
	OGGB-513528	51"
	OGGB-543528	54"
	OGGB-573528	57"
Appliance Skirt: 12" Tall	OGGB-603528	60"
18" - 27" - Side Burner	OGGB-633528	63"
30" - 66" - Gas Grill Base	OGGB-663528	66"
12" - 24" = 1 Door (LH or RH)		
27" - 48" = 2 Door (LH/RH)		
51"-54"= 3 Door (LH/RH/RH)	OGGB-423532	42"
57" - 66" = 4 Door (LH/RH/LH/RH)	OGGB-483532	48"
Vented in Floor and Back Panel	OGGB-543532	54"
Does not Accommodate a LP Tank	OGGB-603532	60"
	OGGB-663532	66"

**GAS GRILL BASE w/WARMING DRAWER**



Custom Appliance Skirt at Top: 12" Tall  
Custom False Panel in Bottom Front for Warming Drawer  
Vented in Floor and Back Panel  
Does not Accommodate a LP Tank

	ITEM	WIDTH
	OGGWDB-363528	36"
	OGGWDB-423528	42"
	OGGWDB-483528	48"

**GRILL BASE w/DOOR & DRW**



Appliance Skirt: 12" Tall  
Drawer 1 & 2: 7.2" H  
1 Door (RH ONLY) 15.69" W x 16" H  
Sub floor over drawers; 12" from top of cabinet  
Vented in Back Panel  
Does not Accommodate a LP Tank

	ITEM	WIDTH
	ODDGGB-363528	36"
	ODDGGB-393528	39"
	ODDGGB-423528	42"
	ODDGGB-453528	45"
	ODDGGB-483528	48"

**MEMPHIS CONTROL PANEL BASE**



False Panel at Top  
Offered as Left Hinge ONLY, Install on Left of Grill Base  
Does NOT include Control Panel Box

	ITEM	WIDTH
	OMCB-183528L	18"



203-270-2900  
sales@theFireFarm.com

**2023 CHALLENGER CABINETS**

**CHALLENGERDESIGNS**  
*+outdoor kitchens*

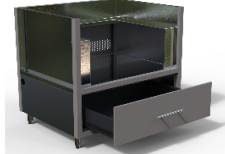
**EVO GRILL BASE**



2 Door (LH/RH)  
Does not Accommodate a LP Tank  
1 1/2" front countertop overhang required

ITEM	WIDTH
OEGB-363528	FOR 25G
OEGB-393534	39" (34"Deep)

**POWER BURNER BASE**



Custom Appliance Shelf Height/Width  
1 Drawer: 10" H  
CANNOT be at End of Cabinet Run or Beside Opening

ITEM	WIDTH
OPBB-243528	24"
OPBB-273528	27"
OPBB-303528	30"
OPBB-363528	36"
PBCOVER-24SS	24" Power Burner Cover, Stainless Steel
PBCOVER-27SS	27" Power Burner Cover, Stainless Steel
PBCOVER-30SS	30" Power Burner Cover, Stainless Steel
PBCOVER-36SS	36" Power Burner Cover, Stainless Steel
PBCOVER-24AL	24" Power Burner Cover, Aluminum
PBCOVER-27AL	27" Power Burner Cover, Aluminum
PBCOVER-30AL	30" Power Burner Cover, Aluminum
PBCOVER-36AL	36" Power Burner Cover, Aluminum

**CERAMIC GRILL BASE**

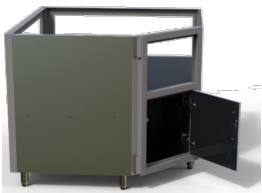


Shelf Height Adjusts to Grill Brand/Model  
24" - 1 Door (LH or RH),  
30" & 33" - 2 Door (LH/RH)  
24"W - Med. or LG. Grill , 30"&33"W - LG or XL Grill  
28"D for Med or LG Grill, 30"D for LG or XL Grill

ITEM	WIDTH
OCGC-243528	24"
OCGC-303528	30"
OCGC-243530	24" (30" deep)
OCGC-303530	30" (30" deep)
OCGC-303532	30" (32" deep)
OCGC-303536	30" (36" deep)
OCGC-333530	33" (30" deep)
OCGDB-303530	For KJ Classic III
OCGDB-303536	For KJ Big Joe III

Please Provide Appliance(s) Brand & Model  
Island is recommended. If unit is to remain stationary against a wall, the cabinet must be 28" Deep for a Medium Grill, 32" Deep for a Large Grill, and 36" Deep for an Extra Large Grill. (Kamado Joe II & III are exempt from these specifications due to Hinge Size & Grill Height)

**CORNER CERAMIC GRILL BASE**



Shelf Height Adjusts to Grill Brand/Model  
1 Door (LH or RH) Width = 13.75"  
Med., LG., or XL Grill  
CANNOT be at End of Cabinet Run or Beside Opening

ITEM	WIDTH
OICGC-403528	40"



203-270-2900  
sales@theFireFarm.com

**2023 CHALLENGER CABINETS**

**CHALLENGERDESIGNS**  
*+ outdoor kitchens*

**OUTSIDE ANGLE BASE**

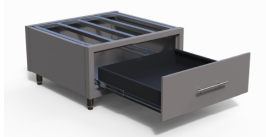
ITEM	DIMENSIONS
OAB-283528	



1 adjustable shelf  
Installs in corner or between two cabinets

**CERAMIC GRILL STAND**

ITEM	DIMENSIONS
<u>OCGS-301728</u>	<u>30"W X 17" H</u>

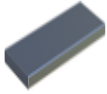


1 Drawer: 10" H

Please Provide Appliance(s) Brand & Model  
Island is recommended. If unit is to remain stationary against a wall, the cabinet must be offset to accommodate certain Grill Brands/Models.

**ADDITIONAL SHELF FOR BASE**

ITEM	WIDTH
BLAS-1828	18"
BLAS-2128	21"
BLAS-2428	24"
BLAS-2728	27"
BLAS-3028	30"



60 lb weight rating  
Not Available for All Base Cabinets

**OUTDOOR ISLAND BASE (OIB)**

ITEM	WIDTH
OIB-24-48" x 24.875"D	24" - 48"
OIB-49-72 x 24.875"D	49" - 72"
OIB-73-96 x 24.875"D	73" - 96"



THIS ALLOWS FOR A ONE PIECE - FULLY ENSEMBLED UNIT

Available with Legs 4"H Adjustable or 3"H Casters (ADA legs n/a)  
24"-71" = 4 Casters/Legs, 72"-96" = 6 Casters/ Legs  
CANNOT be used with Free Standing Appliances (ex: refer)  
Color Matches Cabinet Frame  
Used for One Piece Build (Comparable to Coastals)

3.125" Shallower than cabinets  
Example 28"D cabinet- 3.125"= 24.875"D Outdoor Island Base  
Island Base with Casters adds 1 7/8" to Cabinet Height  
Island Base with Legs adds 1 9/16" to Cabinet Height



203-270-2900  
sales@theFireFarm.com

**2023 CHALLENGER CABINETS**

**CHALLENGERDESIGNS**  
*+outdoor kitchens*

LOCKERS & OVERHEAD CABINETS

**78" LOCKER**



1 Door (LH or RH)  
1 Full Width Adjustable Shelves  
1 Full Width Adjustable Shelf with Coat Hanger  
Must be Attached to a Wall  
Cannot be used with an Outdoor Island Base  
Comes with finished sides and back

ITEM	WIDTH
OCL-187829.5	18"
OCL-217829.5	21"
OCL-247829.5	24"
OCL-277829.5	27"
OCL-307829.5	30"

**84" LOCKER**



1 Door (LH or RH)  
1 Full Width Adjustable Shelves  
1 Full Width Adjustable Shelf with Coat Hanger  
Must be Attached to a Wall  
Cannot be used with an Outdoor Island Base  
Comes with finished sides and back

ITEM	WIDTH
OCL-188429.5	18"
OCL-218429.5	21"
OCL-248429.5	24"
OCL-278429.5	27"
OCL-308429.5	30"

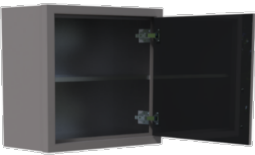
**18" OVERHEAD**



12" - 24" = 1 Door (LH or RH)  
27" - 36" = 2 Door (LH/RH)  
Comes with finished sides

ITEM	WIDTH
KOC-121812	12"
KOC-151812	15"
KOC-181812	18"
KOC-211812	21"
KOC-241812	24"
KOC-271812	27"
KOC-301812	30"
KOC-331812	33"
KOC-361812	36"

**24" OVERHEAD**



1 Full Width Adj Shelf  
12" - 24" = 1 Door (LH or RH)  
27" - 36" = 2 Door (LH/RH)  
Comes with finished sides

ITEM	WIDTH
KOC-122412	12"
KOC-152412	15"
KOC-182412	18"
KOC-212412	21"
KOC-242412	24"
KOC-272412	27"
KOC-302412	30"
KOC-332412	33"
KOC-362412	36"

**30" OVERHEAD**



1 Full Width Adj Shelf  
12" - 24" = 1 Door (LH or RH)  
27" - 36" = 2 Door (LH/RH)  
Comes with finished sides

ITEM	WIDTH
KOC-123012	12"
KOC-153012	15"
KOC-183012	18"
KOC-213012	21"
KOC-243012	24"
KOC-273012	27"
KOC-303012	30"
KOC-333012	33"
KOC-363012	36"





203-270-2900  
sales@theFireFarm.com

**2023 CHALLENGER CABINETS**

**CHALLENGERDESIGNS**  
*+outdoor kitchens*

**36" OVERHEAD**



2 Full Width Adj Shelves  
12" - 24" = 1 Door (LH or RH)  
27" - 36" = 2 Door (LH/RH)  
Comes with finished sides

ITEM	WIDTH
KOC-123612	12"
KOC-153612	15"
KOC-183612	18"
KOC-213612	21"
KOC-243612	24"
KOC-273612	27"
KOC-303612	30"
KOC-333612	33"
KOC-363612	36"

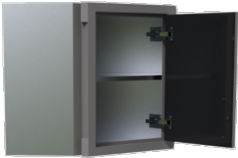
**BLIND CORNER OVERHEAD**



18" High -No Shelf  
24" & 30" - 1 Full Width Adj Shelf  
All Cabinets 1 Door (LH or RH)  
Comes with finished sides

ITEM	DIMENSIONS
OOBC-361812	36"W x 18" H
OOBC-362412	36" W x 24" H
OOBC-363012	36"W x 30" H
OOBC-363612	36"W x 36" H

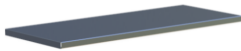
**INSIDE CORNER OVERHEAD**



18" High -No Shelf  
24" & 30" - 1 Shelf  
All Cabinets 1 Door (LH or RH)  
CANNOT be at End of Cabinet Run or Beside Opening  
3" Filler panel recommended for door clearance  
\*\*SIDES NOT FINISHED\*\*

ITEM	DIMENSIONS
KOIC-241812	24" W x 18" H
KOIC-242412	24" W x 24" H
KOIC-243012	24" W x 30" H
KOIC-243612	24" W x 36" H

**ADDITIONAL SHELF FOR OVERHEAD**



ITEM	WIDTH
OAS-12	12"
OAS-15	15"
OAS-18	18"
OAS-21	21"
OAS-24	24"
OAS-27	27"
OAS-30	30"
OAS-33	33"
OAS-36	36"



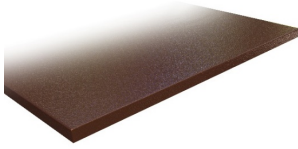
203-270-2900  
sales@theFireFarm.com

**2023 CHALLENGER CABINETS**

**CHALLENGERDESIGNS**  
*+outdoor kitchens*

COUNTERTOP OPTIONS

**ALUMINUM COUNTERTOPS**



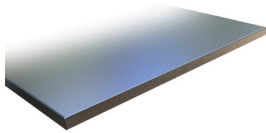
ALL PRICING IS COST PER LINEAL INCH  
.090 Aluminum Powdercoated  
Top overhang is 1/2" on all sides; unless against wall

ITEM	DESCRIPTION
ACT- 28.5	Countertop, 28.5" D x 1.25" Thick
ACT- 29	Countertop, 29" D x 1.25" Thick
ACT-30.5	Countertop, 30.5"D x 1.25" Thick
ACT- 31	Countertop, 31" D x 1.25" Thick
ACT-32.5	Countertop, 32.5"D x 1.25" Thick
ACT- 33	Countertop, 33"D x 1.25" Thick
ACT- 36.5	Countertop, 36.5"D x 1.25" Thick
ACT- 37	Countertop, 37" D x 1.25" Thick

ABS-4	BACKSPLASH, 4"H x 1"Thick
-------	---------------------------

ABT-16	BAR TOP WITH RISERS, 16"D x 1.25"Thick Bar Top Corner Support Measurements: 8" W x 8"D x 5" H; Center Support Measurements: 12" W x 5" H Center Supports are needed for every 5' of Bar Top Countertop Overlap of Bar Top is 9", Edge Overhang of 7"
--------	---

**STAINLESS STEEL COUNTERTOPS**



ALL PRICING IS COST PER LINEAL INCH  
16 Gauge food grade Stainless Steel  
Top overhang is 1/2" on all sides; unless against wall

ITEM	DESCRIPTION
SST-28.5	Countertop, 28"D x 1.25" Thick
SST-29	Countertop, 29" D x 1.25" Thick
SST-30.5	Countertop, 30.5"D x 1.25" Thick
SST-31	Countertop, 31"D x 1.25" Thick
SST-32.5	Countertop, 32.5"D x 1.25" Thick
SST-33	Countertop, 33"D x 1.25" Thick
SST-36.5	Countertop, 36.5"D x 1.25" Thick
SST-37	Countertop, 37"D x 1.25" Thick

SSBS -4	BACKSPLASH, 4"H x 1"Thick
---------	---------------------------

SSBT-16	BAR TOP WITH RISERS, 16"D x 1.25"Thick
---------	--

ADD-ONS | OPTIONS

**PREMIUM 30" SINK**



ITEM	DESCRIPTION
SINK-30	30" Premium Sink and Sprayer Spring Faucet 304, 18G Stainless Steel, Undermount Sink Installation Brushed Satin Finish Sink Basin, Brushed Nickel Finished Spring Faucet Overall Dimensions: 31.25"W x 18"D x 9"H; Basin Dimensions: 29.25"W x 16"D Faucet Requires 20" Clearance Height Minimum 39" Sink Base with side mounted faucet

**STANDARD SINK**



ITEM	DESCRIPTION
SINK-15	15" Standard Sink and Faucet 201, 18G Stainless Steel, Undermount Installation Brushed Satin Finish Sink Basin, Brushed Nickel Finish Faucet Overall Dimensions: 15"W x 15"D x 5.5"H; Basin Dimensions: 13"W x 11.0625"D

**ON DEMAND WATER SYSTEM**

ITEM	DESCRIPTION
WTP	On Demand Water System 12 Volt Pump, Battery Not Included One 5-gal Fresh Water Tank   One 5-gal Gray Water Tank

**LEG OPTION**

ITEM	DESCRIPTION
4ADALEGS	Set of 4- ADA Compliant Legs, 1.5"-2.5" Tall Cannot accommodate Toe Kick

**TOWEL BAR / GRAB HANDLE**

ITEM	DESCRIPTION
TBH	Towel Bar Handle Towel Bar/Grab Handle for maneuvering units Adds 1/4" width to cabinet, 3 3/4" width to overall run



203-270-2900  
sales@theFireFarm.com

**2023 CHALLENGER CABINETS**

**CHALLENGERDESIGNS**  
*+outdoor kitchens*

ADD-ONS | OPTIONS

**END PANEL**

ITEM	DESCRIPTION
<u>EP-28D</u>	<u>End Panel, 35"H x 28"D</u>
EP-30D	End Panel, 35"H x 30"D
EP-32D	End Panel, 35"H x 32"D
EP-36D	End Panel, 35"H x 36"D

Includes 2 Count 1/2" Adjustable Feet  
Provides Countertop Support By Appliance Openings or Corners

**FILLER PANEL**

FP-13"H	Ceramic Grill Stand Filler Panel, (SPECIFY WIDTH)"W X 13"H
FP-18"H	Overhead Filler Panel, (SPECIFY WIDTH)"W X 18"H
FP-24"H	Overhead Filler Panel, (SPECIFY WIDTH)"W X 24"H
FP-30"H	Overhead Filler Panel, (SPECIFY WIDTH)"W X 30"H
<u>FP-31"H</u>	<u>Base Filler Panel, (SPECIFY WIDTH)"W X 31"H</u>
FP-36"H	Overhead Filler Panel, (SPECIFY WIDTH)"W X 31"H
FP-74"H	Locker Filler Panel, (SPECIFY WIDTH)"W X 74"H
FP-80"H	Locker Filler Panel, (SPECIFY WIDTH)"W X 80"H

1" Minimum Width | 6" Maximum width

**FILLER ANGLE KIT**

FAK-30D	Filler Angle Kit, 30 Degrees
FAK-45D	Filler Angle Kit, 45 Degrees

Kit Includes: 2 Angle Pieces & 2 Finished Back Panels (5.1875" W for 30 Degree & 9.3125"W for 45 Degree)  
Does Not Provide Countertop Support

**OUTSIDE CORNER PANEL KIT**

<u>OCP-KIT</u>	<u>OUTSIDE CORNER PANEL KIT(SPECIFY WIDTHS)</u> (Ships unassembled)
----------------	--

**FINISHED BACK PANEL**

<u>FBP-31"H</u>	<u>Framed, Finished Back Panel, (SPECIFY WIDTH)"W X 31"H</u> 6" Minimum Width   48" Maximum width Commonly used between Cabinets to Create an Appliance Opening
-----------------	---

**FLUTED FILLER POST**

DFP-31.5"H-19	Fluted Filler Posts, 3"W x 3"D x 31.5"H
DFP-34"H-19	Fluted Filler Posts, 3"W x 3"D x 34"H

Ships with Adjustable Sleeve  
31.5"H for ADA Legs, 35"H for Standard 4" Adjustable Legs

**TOE KICK**

<u>17TK-94W</u>	<u>Toe Kick, 94" Powder Coated Aluminum</u> Clips onto 4" Adjustable Legs Cut to size at installation CANNOT be used with ADA Legs
-----------------	---

**TOE KICK EXTENSIONS**

TKE-2	1"x 2" x 94' Toe Kick Extension with Qty (2) -8" corners
TKE-3	1"x 3" x 94' Toe Kick Extension with Qty (2) -8" corners
TKE-4	1"x 4" x 94' Toe Kick Extension with Qty (2) -8" corners

**SHEET METAL**

PCP- (Specify Color)	Aluminum Finished Panel(.060), (SPECIFY HEIGHT AND WIDTH) ALL PRICING IS COST PER SQUARE FOOT
PCP-SST	Stainless Steel Finished Panel, (SPECIFY HEIGHT AND WIDTH) ALL PRICING IS COST PER SQUARE FOOT

**ACCESSORIES (shipped loose)**

GRATEHANGER	Grate Hanger, Stainless Steel
TOOLHOOK	Tool/Utensil Hook, Textured Black
TOWELHOLDER	Paper Towel Holder, Textured Black (21" or 24"w cabinets only)